

OLYMPUS[®]

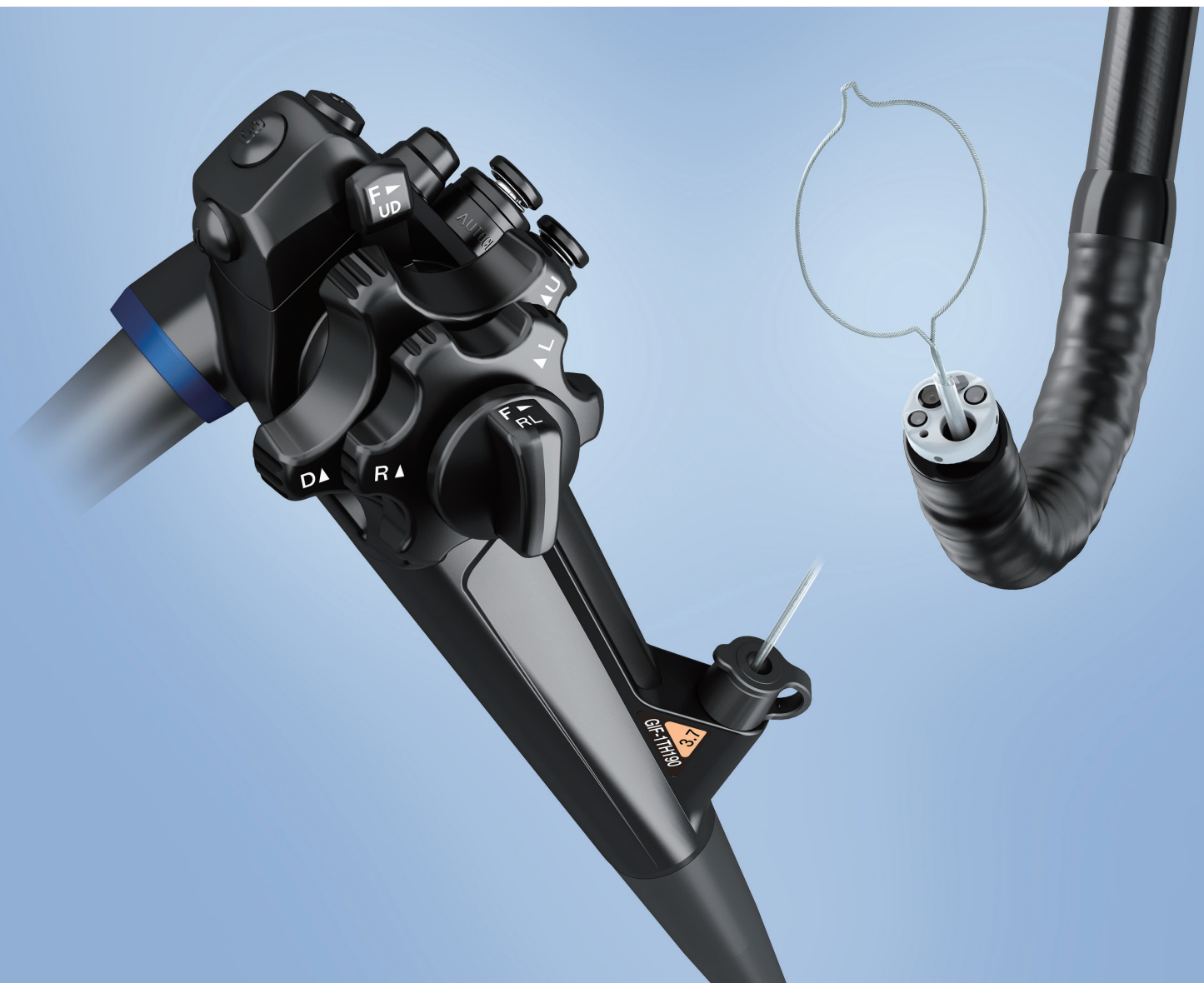
Your Vision, Our Future

EVIS EXERA III

EVIS EXERA III GASTROINTESTINAL VIDEOSCOPE

GIF-1TH190

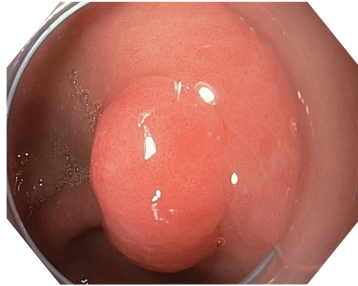
Therapeutic endoscope with superb HDTV image quality and a 3.7 mm instrument channel





HDTV Image Quality

HDTV image quality delivers high-definition observation capabilities, even in a new, slimmer scope design.

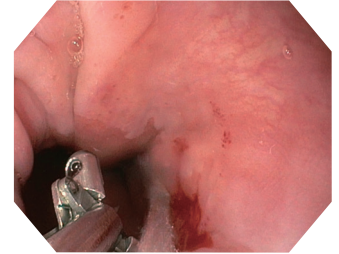


Close Focus

The GIF-1TH190 enables close observation of the mucosal surface (2 mm) without the need for electronic magnification.

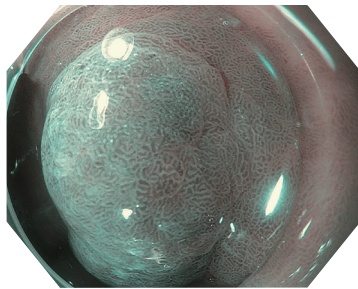
Water Jet

A forward water jet helps to keep the mucosa clear during observation and treatment.



NBI (Narrow Band Imaging)

NBI in the GIF-1TH190 provides twice the viewable distance of conventional EVIS EXERA II 180 series scopes* and is significantly brighter. HD NBI provides contrast, which may aid in the interpretation of mucosal morphology, vascular patterns, and blood vessel appearance in patients with Barrett's esophagus.



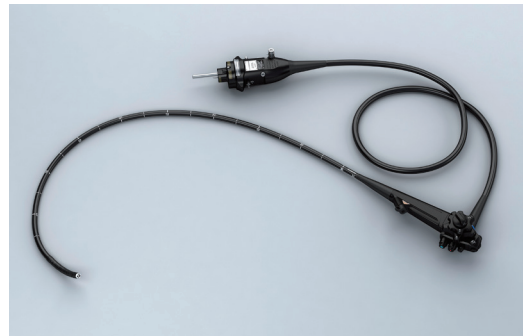
Waterproof One-touch Connector

A new connector design minimizes the effort required for setup prior to and in between cases. In addition, it is fully submersible and eliminates the need for a water-resistant cap and the associated risk of an expensive repair due to accidental immersion.



Slim Design and Therapeutic Capability

The 10.0 mm distal end diameter is 0.9 mm smaller than the predecessor** – while still maintaining the flexibility of a 3.7 mm instrument channel diameter.



Optical System	Field of view	140°
	Direction of view	Forward viewing
	Depth of field	2-100 mm
Insertion Section	Distal end outer diameter	10.0 mm
	Distal end enlarged	
	Insertion tube outer diameter	10.9 mm
	Working length	1030 mm

Instrument Channel	Channel inner diameter	3.7 mm
	Minimum visible distance	3.0 mm from the distal end
Bending Section	Direction from which endotherapy accessories enter and exit the endoscopic image	
	Angulation range	Up 210° Down 90° Right 100° Left 100°
Total Length	1350 mm	
Compatible EVIS EXERA System	Video System Center OLYMPUS CV-190 Xenon Light Source OLYMPUS CLV-190	

* EVIS EXERA II Gastrointestinal Videoscope OLYMPUS GIF TYPE Q180
** EVIS EXERA Gastrointestinal Videoscope OLYMPUS GIF TYPE 1TQ160

Image courtesy of Robert H. Hawes, MD and Muhammad Hasan, MD (Florida Hospital Orlando, US)
Water Jet image: Image courtesy of Horst Neuhaus, MD (Evangelisches Krankenhaus Düsseldorf, Germany)

Specifications, design, and accessories are subject to change without any notice or obligation on the part of the manufacturer. Olympus is a registered trademark of Olympus Corporation, Olympus America Inc., and/or their affiliates.